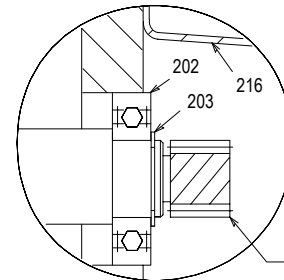


- NOTES:**
- ITEMS 100 & 101, BEVEL GEAR AND PINION ARE AVAILABLE IN MATCHED SETS ONLY. NOT SOLD SEPARATELY.
  - ITEMS 210 & 212, HELICAL PINION AND GEAR ARE AVAILABLE IN MATCHED SETS ONLY. NOT SOLD SEPARATELY.
  - BOLTED CONSTRUCTION USED ON MODELS 74, 75 & 76 ONLY. BEVEL GEAR (100) IS PRESSED WITH HOOK KEY ITEM 120 ON LOW SPEED SHAFT (402) ON MODELS 72 AND 73.
  - DOUBLE ROW TAPER ROLLER BEARING AND O-RING FURNISHED ON MODEL 76.
  - WHEN ORDERING PARTS, SPECIFY: MODEL & SERIAL NUMBER, ITEM NUMBER AND DRAWING NUMBER.
  - ITEMS 300, 301 & 302 REPLACE ITEMS 202, 203 & 209 ON MODELS FURNISHED AFTER AUGUST 1998.
  - PLAINWASHERS FURNISHED ON MODELS 75 AND 76.
  - RETAINING RING (ITEM 104) USED ONLY ON MODEL 72.



**DETAIL "A"**  
MODEL 72 TOTAL RATIO 32.1 ONLY  
MODEL 75 TOTAL RATIOS 25.5 AND 38.1 ONLY (6)

207	KEY - HIGH SPEED SHAFT	423	LOCKWASHER
206	RETAINING RING	422	HEX HEAD CAP SCREW
205	OUTER BEARING	420	LOW SPEED BEARING CAGE
204	LOCKNUT - CHANGE GEAR PINION	417	SHIM PACK - LOW SPEED BRG. CAGE
203	RETAINING RING - SEE NOTE 6	416	OIL SEAL - INNER
202	INNER BEARING	415	OIL SEAL - OUTER
201	HIGH SPEED SHAFT	413	HEX HEAD CAP SCREW - NYLOK
120	HOOK KEY - SEE NOTE 3	412	SHIM PACK - LOW SPEED RETAINER
111	HEX HEAD CAP SCREW - NYLOK	411	OIL SEAL - LOWER
110	RETAINER	410	LOW SPEED RETAINER
109	SHIM PACK - BEVEL PINION ADJUST.	408	LOWER BEARING
108	SHIM PACK - BEARING ADJUSTMENT	406	LOCKNUT
107	BEARING CAGE - BEVEL PINION	405	HEX HEAD CAP SCREW
106	LOCKNUT & WASHER	404	UPPER BEARING
105	OUTER BEARING	403	COLLAR
104	RETAINING RING	402	LOW SPEED SHAFT
103	SPACER	302	BEARING - SEE NOTE 6
102	INNER BEARING	301	RETAINING RING
101	BEVEL PINION - SEE NOTE 1	300	CHANGE GEAR PINION AND SHAFT - SEE NOTE 6
100	BEVEL GEAR - SEE NOTE 1	218	LOCKWASHER - SEE NOTE 7
29	O-RING	217	HEX HEAD CAP SCREW
28	GASKET - COVERPLATE	216	CHANGE GEAR COVER
27	COVERPLATE	215	GASKET - CHANGE GEAR COVER
26	LOCKWASHER	214	LOCKNUT - CHANGE GEAR
25	HEX HEAD CAP SCREW	213	KEY - CHANGE GEAR
24	GASKET - HIGH SPEED SEAL CAGE	212	CHANGE GEAR - SEE NOTE 2
23	OIL SEAL	211	KEY - CHANGE GEAR PINION
22	HIGH SPEED SEAL CAGE	210	CHANGE GEAR PINION - SEE NOTE 2
21	BREATHER	209	CHANGE GEAR PINION & SHAFT - SEE NOTE 6
20	OIL DIPSTICK		
2	HOUSING		
ITEM	PART NAME	ITEM	PART NAME

ALL EQUIPMENT DESIGN AND APPLICATION DATA SHOWN HEREIN AND RELATED KNOW-HOW IS CONFIDENTIAL AND THE PROPERTY OF THE LIGHTNIN GROUP OF COMPANIES. NO USE OR DISCLOSURE THEREOF MAY BE MADE WITHOUT OUR WRITTEN PERMISSION.

**LIGHTNIN**<sup>®</sup>  
MIXERS AND AERATORS

ASSEMBLY DRAWING

**MODEL 72 THRU 76**  
**GEAR DRIVE**

DOUBLE REDUCTION



CERTIFIED

© LIGHTNIN  
2000