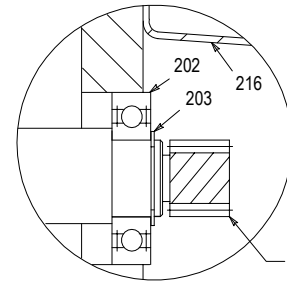


NOTES:

1. ITEMS 100 & 101, BEVEL GEAR AND PINION ARE AVAILABLE IN MATCHED SETS ONLY. NOT SOLD SEPARATELY.
2. ITEMS 210 & 212, 310 & 312, HELICAL PINIONS AND GEARS ARE AVAILABLE IN MATCHED SETS ONLY. NOT SOLD SEPARATELY.
3. BOLTED CONSTRUCTION USED ON MODELS 74, 75 & 76 ONLY. BEVEL GEAR (100) IS PRESSED ON LOW SPEED SHAFT (402) ON MODEL 73.
4. DOUBLE ROW TAPER ROLLER BEARING AND O-RING FURNISHED ON MODEL 76.
5. WHEN ORDERING PARTS, SPECIFY: MODEL & SERIAL NUMBER, ITEM NUMBER AND DRAWING NUMBER.
6. ITEMS 300, 301 & 302 REPLACE ITEMS 202, 203 & 209 ON MODELS FURNISHED AFTER AUGUST 1998.
7. PLAINWASHERS FURNISHED ON MODELS 75 AND 76.
8. MODEL 76 USES (1) ITEM 304 AND (1) ITEM 324. MODELS 73, 74 & 75 USE (3) ITEM 304, BUT NO ITEM 324.

213	KEY - CHANGE GEAR	423	LOCKWASHER
212	CHANGE GEAR - SEE NOTE 2	422	HEX HEAD CAP SCREW
211	KEY - CHANGE GEAR PINION	420	LOW SPEED BEARING CAGE
210	CHANGE GEAR PINION - SEE NOTE 2	417	SHIM PACK - LOW SPEED BRG. CAGE
209	CHANGE GEAR PINION AND SHAFT - SEE NOTE 6	416	OIL SEAL - INNER
206	RETAINING RING	415	OIL SEAL - OUTER
205	OUTER BEARING	413	HEX HEAD CAP SCREW - NYLOK
204	LOCKNUT - CHANGE GEAR PINION	412	SHIM PACK - LOW SPEED RETAINER
203	RETAINING RING - SEE NOTE 6	411	OIL SEAL - LOWER
202	INNER BEARING	410	LOW SPEED RETAINER
111	HEX HEAD CAP SCREW - NYLOK	408	LOWER BEARING
110	RETAINER	406	LOCKNUT
109	SHIM PACK - BEVEL PINION ADJUST.	405	HEX HEAD CAP SCREW
108	SHIM PACK - BEARING ADJUSTMENT	404	UPPER BEARING
107	BEARING CAGE - BEVEL PINION	403	COLLAR
106	LOCKNUT & WASHER	402	LOW SPEED SHAFT
105	OUTER BEARING	324	RETAINING RING - SEE NOTE 8
104	RETAINING RING	317	HEX HEAD CAP SCREW - NYLOK
103	SPACER	316	RETAINER
102	INNER BEARING	315	INTERMEDIATE SHAFT
101	BEVEL PINION - SEE NOTE 1	314	LOCKNUT - HIGH SPEED GEAR
100	BEVEL GEAR - SEE NOTE 1	313	KEY - HIGH SPEED GEAR
39	LOCKWASHER	312	HIGH SPEED GEAR - SEE NOTE 2
38	HEX HEAD CAP SCREW	310	HIGH SPEED PINION - SEE NOTE 2
36	LOCKWASHER	309	KEY - HIGH SPEED EXTENSION
35	HEX HEAD CAP SCREW	307	HEX HEAD CAP SCREW - NYLOK
34	GASKET - HIGH SPEED SEAL CAGE	306	OIL SLINGER
33	OIL SEAL	305	OUTER BEARING
32	HIGH SPEED SEAL CAGE	304	RETAINING RING - SEE NOTE 8
31	GASKET - HIGH SPEED HEAD	303	INNER BEARING
30	HIGH SPEED HEAD	302	BEARING - SEE NOTE 6
29	O-RING	301	RETAINING RING
28	GASKET - COVERPLATE	300	CHANGE GEAR PINION AND SHAFT - SEE NOTE 6
27	COVERPLATE	218	LOCKWASHER - SEE NOTE 7
21	BREATHER	217	HEX HEAD CAP SCREW
20	OIL DIPSTICK	216	CHANGE GEAR COVER
2	HOUSING	215	GASKET - CHANGE GEAR COVER
		214	LOCKNUT - CHANGE GEAR
ITEM	PART NAME	ITEM	PART NAME



DETAIL "A"
MODEL 75 TOTAL RATIOS 70.0 AND 105 ONLY (6)

ALL EQUIPMENT DESIGN AND APPLICATION DATA SHOWN HEREIN AND RELATED KNOW-HOW IS CONFIDENTIAL AND THE PROPERTY OF THE LIGHTNIN GROUP OF COMPANIES. NO USE OR DISCLOSURE THEREOF MAY BE MADE WITHOUT OUR WRITTEN PERMISSION.

LIGHTNIN[®]
MIXERS AND AERATORS

ASSEMBLY DRAWING

MODEL 73 THRU 76
GEAR DRIVE

TRIPLE REDUCTION



© LIGHTNIN
1998