

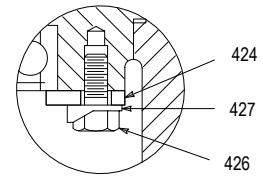
NOTES:

1. ITEMS 100 & 101, BEVEL GEAR AND PINION ARE AVAILABLE IN MATCHED SETS ONLY. NOT SOLD SEPARATELY.
2. ITEMS 210 & 212, HELICAL PINION AND GEAR ARE AVAILABLE IN MATCHED SETS ONLY. NOT SOLD SEPARATELY.

LUBRICANT FITTING
LOWER BEARING

WHEN ORDERING PARTS, SPECIFY:
MODEL & SERIAL NUMBER, ITEM NUMBER
AND DRAWING NUMBER.

207	KEY - HIGH SPEED SHAFT	428	RETAINING RING
206	RETAINING RING	427	LOCKPLATE
205	OUTER BEARING	426	HEX HEAD CAP SCREW
204	LOCKNUT - CHANGE GEAR PINION	424	BEARING RETAINER
203	RETAINING RING	425	RETAINING RING
202	INNER BEARING	422	HEX HEAD CAP SCREW
201	HIGH SPEED SHAFT	420	LOW SPEED BEARING CAGE
122	OIL BAFFLE	419	SHIM PACK - UPPER BEARING
121	GASKET - OIL BAFFLE	418	RETAINING RING
120	KEY - BEVEL GEAR	417	SHIM PACK - LOW SPEED BRG. CAGE
111	FLAT HEAD SCREW	415	OIL SEAL
110	RETAINER	414	LOCKWASHER
109	SHIM PACK - BEVEL PINION ADJUST.	413	HEX HEAD CAP SCREW
108	SHIM PACK - BEARING ADJUSTMENT	412	GASKET - LOW SPEED RETAINER
105	OUTER BEARING	411	OIL SEAL - LOWER
104	RETAINING RING	410	LOW SPEED RETAINER
103	SPACER	408	LOWER BEARING
102	INNER BEARING	404	UPPER BEARING
101	BEVEL PINION - SEE NOTE 1	402	LOW SPEED SHAFT
100	BEVEL GEAR - SEE NOTE 1	218	LOCKWASHER
28	GASKET - COVERPLATE	217	HEX HEAD CAP SCREW
27	COVERPLATE	216	CHANGE GEAR COVER
26	LOCKWASHER	215	GASKET - CHANGE GEAR COVER
25	HEX HEAD CAP SCREW	214	LOCKNUT - CHANGE GEAR
24	GASKET - HIGH SPEED SEAL CAGE	213	KEY - CHANGE GEAR
23	OIL SEAL	212	CHANGE GEAR - SEE NOTE 2
22	HIGH SPEED SEAL CAGE	211	KEY - CHANGE GEAR PINION
20	OIL DIPSTICK & BREATHER ASS'Y	210	CHANGE GEAR PINION - SEE NOTE 2
2	HOUSING		
ITEM	PART NAME	ITEM	PART NAME



ALTERNATE CONSTRUCTION
DETAIL FOR UNITS BUILT
BEFORE JAN. 1, 1984

ALL EQUIPMENT DESIGN AND APPLICATION DATA SHOWN HEREIN AND RELATED KNOW-HOW IS CONFIDENTIAL AND THE PROPERTY OF THE LIGHTNIN GROUP OF COMPANIES. NO USE OR DISCLOSURE THEREOF MAY BE MADE WITHOUT OUR WRITTEN PERMISSION.

LIGHTNIN[®]
MIXERS AND AERATORS

ASSEMBLY DRAWING

**MODEL 71
GEAR DRIVE**



CERTIFIED

© LIGHTNIN
1984